

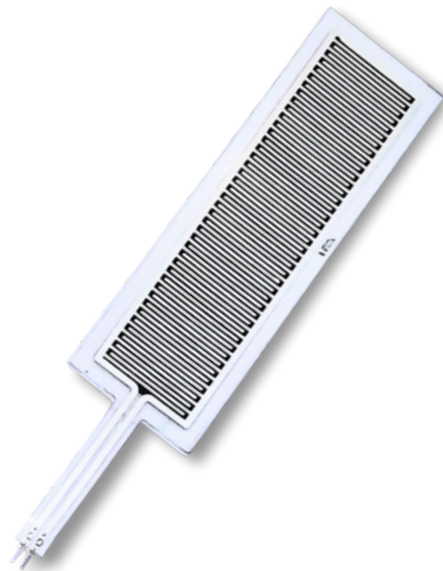
Rectangle Force Sensor Resistor

◆ Description :

These sensors are designed to measure forehead pressure in a wide range of applications. Flexible, cost-efficient, compact and versatile force-sensing solution can be custom designed for specific applications and offers various integration possibilities. Its diminutive size makes it ideal for applications where space is a premium, such as in medical devices, robotics, and consumer electronics etc.

◆ Application :

- Sports & Medical Performance Optimization
- Diagnosing Foot Conditions
- Rehabilitation Progress Tracking
- Gait Analysis
- Footwear Development



◆ Feature :

- Wide Force Sensing Range (5n to 450n)
- Detects Force, Pressure & Touch
- Thin, Lightweight & Flexible
- Able to withstand extremetemperatures and conditions
- Customizable to a wide range of applications
- Cost Effective Sensing Solutions

Rectangle Force Sensor Resistor

✦ General Information :

Property	Value
Technology	FSR (shunt mode)
Response time	< 1 msec
Sensing Area	26x100mm
Unload condition	0.981 to 1.2M Ohms
Pressure range	0 to 50kg
Conductive Paste	Silver and Carbon
Material Type	(PET) Polyester durable material
Dimension	34x155mm
Thickness	0.3mm
Connector	2-pin Male Pin
Pin spacing	2.5 mm
Accuracy	High precision with $\pm 5\%$
Durability	>1 million times
IP rating	IP67
Country of origin	India

● — Rectangle Force Sensor Resistor — ●

✦ Datasheet Graph :

