

## FOOT PRESSURE INSOLE SENSOR

### ◆ Description :

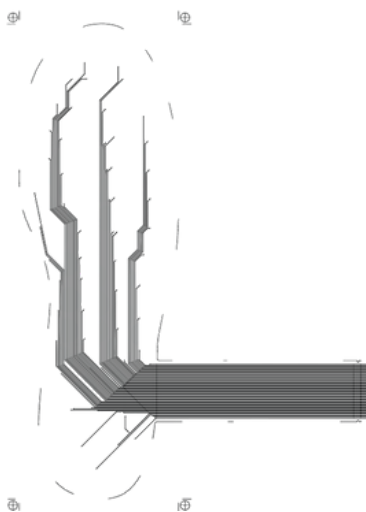
Introducing our Foot Insole Printed Force Sensor, a cutting-edge solution designed to provide real-time, accurate, and unobtrusive monitoring of foot pressure and force distribution. This innovative sensor is ideal for a wide range of applications, from sports performance analysis and medical diagnostics to rehabilitation and gait analysis. Flexible, cost-efficient, can be custom designed for specific applications and offers various integration possibilities.

### ◆ Application :

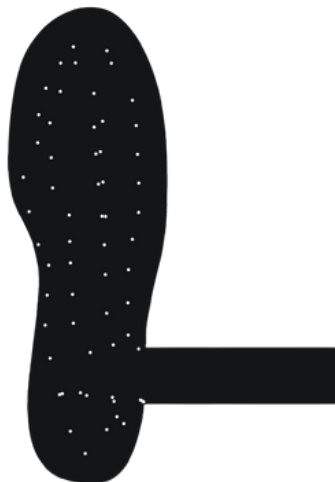
- Sports & Medical Performance Optimization
- Diagnosing Foot Conditions
- Rehabilitation Progress Tracking
- Gait Analysis
- Footwear Development



### ◆ Interface Diagram :



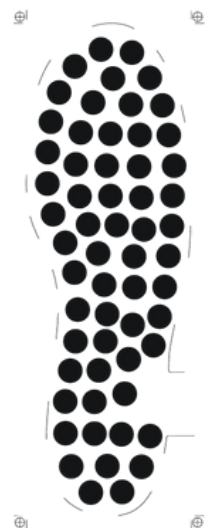
Sequence - 1



Sequence - 2



Sequence - 3



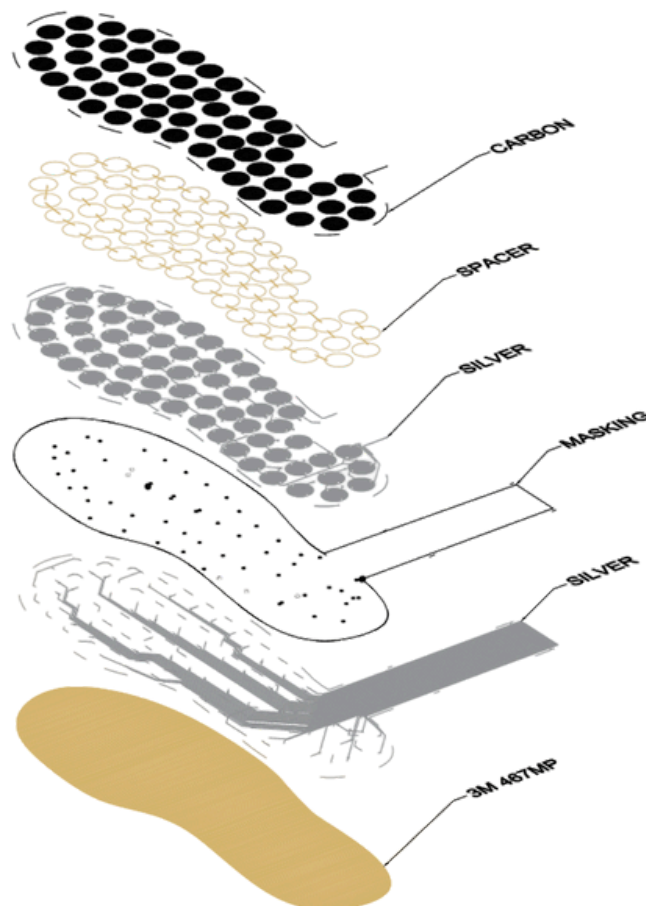
Sequence - 4

## FOOT PRESSURE INSOLE SENSOR

### ✦ Feature :

- Wide Force Sensing Range (5n to 450n)
- Detects Force, Pressure & Touch
- Thin, Lightweight & Flexible
- Able to withstand extreme temperatures and conditions
- Customizable to a wide range of applications
- Cost Effective Sensing Solutions

### ✦ Exploded View :



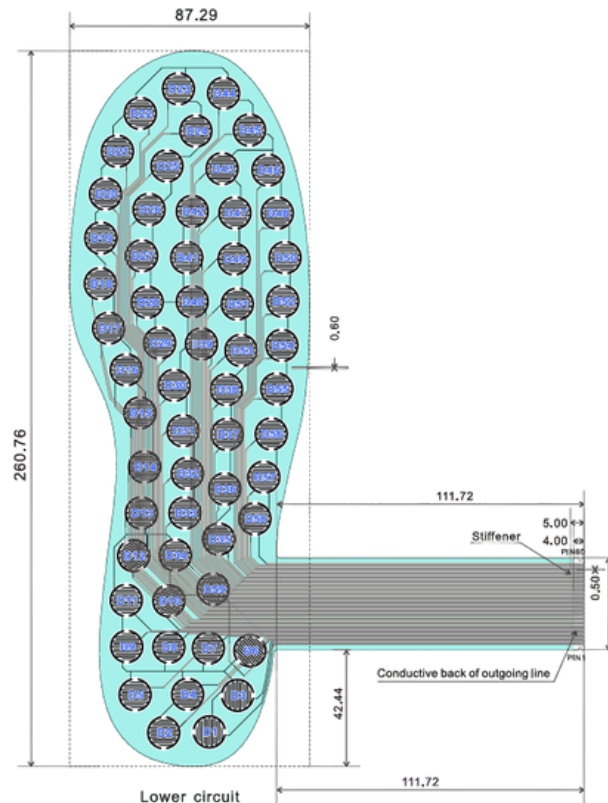
## FOOT PRESSURE INSOLE SENSOR

### ✦ General Information :

Property	Value
Technology	FSR
Number of sensing points	59 points
Sensing Area	13 mm
Carbon resistance range	3 to 4 M ohms
Weight range	400gm TO 50kg
Conductive Paste	Silver and Carbon
Overall Thickness	0.385mm
Material Type	(PET) Polyester durable material
Dimension	87.29mm x 260.76mm
Durability	>100K times
Country of origin	India
Response time	1 Millisecond
IP rating	IP67
Operation temperature	-20°C +70 °C
Pressure resolution	Continuous (Analog)

## FOOT PRESSURE INSOLE SENSOR

### ✦ Sensor Mechanical Data :



### ✦ Datasheet Graph :

